

## Models: PF400SC

### Features:

The design of the Slide Couplings allows the submersible pump to be installed or removed without requiring personnel to enter the wet well.

- **DISCHARGE:** 4" ANSI Flanged
- **SOLIDS:** 4" Diameter Spherical
- **BASE ELBOW:** Ductile Iron
- **PULL-OUT FLANGE:** Ductile Iron with Stainless Steel Sealing Ring
- **HARDWARE:** 300 Series Stainless steel
- **PAINT:** Power Coated
- **UPPER GUIDE BRACKET:** Stainless steel
- **GUIDE RAIL PINS:** Will Accept 2" Pipe Rails
- **WEIGHT ALLOWANCE:** Max pump weight 2000lbs.
- **OPTIONAL:** Intermediate Guide Rail Support, PF200IB-4 (see page 17)
- **WARRANTY:** 1 year



**WARNING:** CANCER AND REPRODUCTIVE HARM-  
[WWW.P65WARNINGS.CA.GOV](http://WWW.P65WARNINGS.CA.GOV)

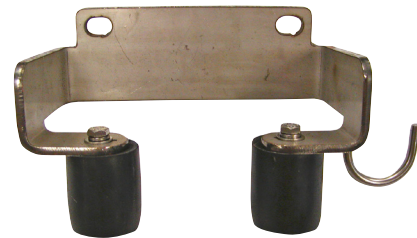
Assemblies **DO NOT** include Pump, Discharge piping, Guide Rails, Lifting Chain, Flange Gaskets nor Valves and Handle.

### Design

The stationary base elbow is bolted to the floor of the wet well. The pump is bolted to the cast iron movable fitting which is free to ride up and down the guide rails. An stainless steel ring is attached to the inside face of the movable. The tapered faces of the movable and base elbow allow for a positive mating of the sealing ring to base. This assures a complete and positive seal which allows pumps to operate without hydraulic leakage over a wide range of discharge pressures.



**Slide Coupling Assembly  
with Upper Guide Rail  
Bracket**



**PF20UB** - Stainless Upper Guide Bracket included

**Accessories - Slide Couplings - 4"**



**Power-Flo Pumps & Systems**

*a Power-Flo Technologies company*

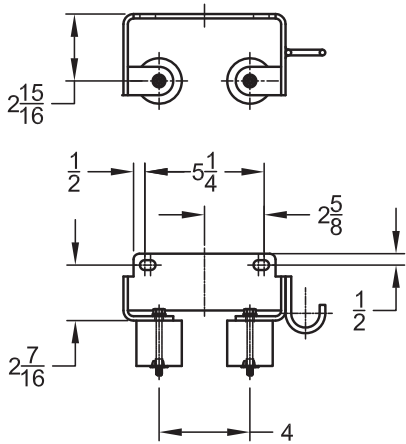
877-24PUMPS • fax: 516-812-6897 • [www.powerflopumps.com](http://www.powerflopumps.com)

Sect.  
AC  
Page  
7

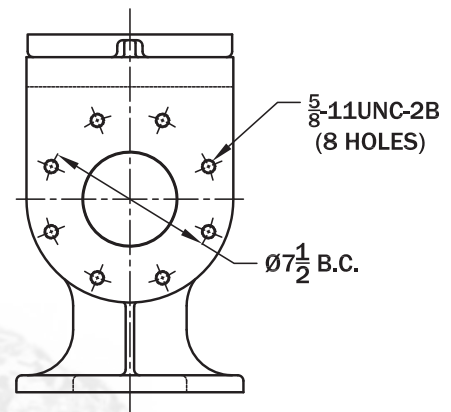
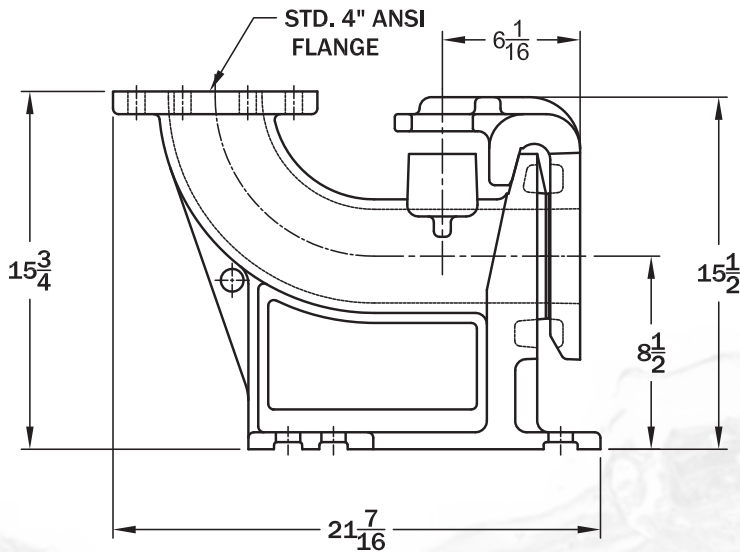
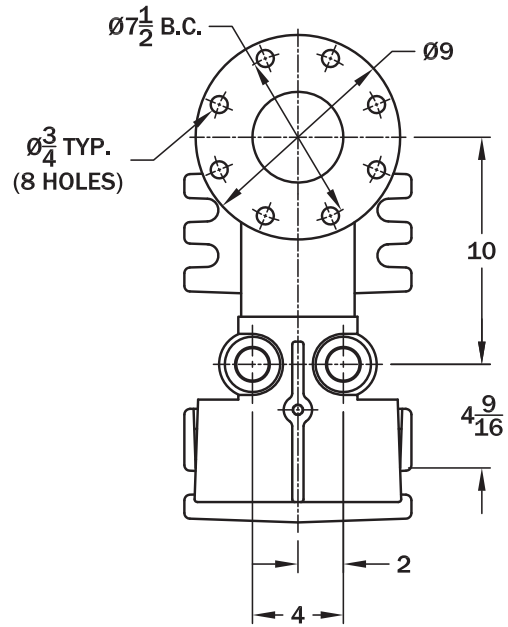
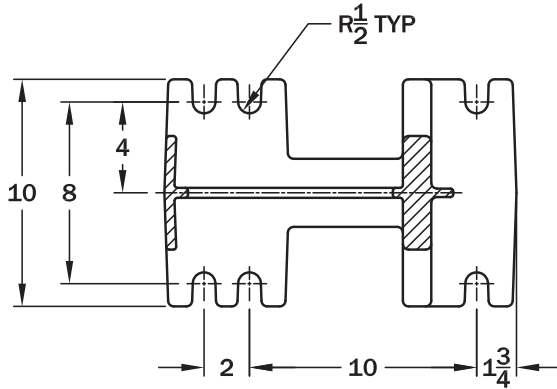
Rev.  
02/2021

Models: PF400SC

Accessories - Slide Couplings - 4"



MOUNTING DIMENSIONS



MODEL	SIZE
PF400SC	4"

